

وظایف مرکز

طبق ماده ۲۰ آیین‌نامه اجرایی قانون تشویق و حمایت سرمایه‌گذاری خارجی مصوب سال ۱۳۸۱ و ماده ۴ مصوبه هیئت محترم وزیران به شماره ۴۴۴۵۸/۲۶۹۸۶ مورخ ۸۹/۲/۸ مرکز خدمات سرمایه‌گذاری استان موظف به انجام اموری از قبیل ذیل می‌باشند:

۱ قبل از اخذ مجوز سرمایه‌گذاری خارجی

- اطلاع رسانی و آرایه مشورت‌های مرتبط به پذیرش و حمایت از سرمایه‌گذاران در ارتباط با امور مربوط به پذیرش و حمایت از سرمایه‌گذاری خارجی
- انجام هماهنگی و پشتیبانی لازم در امور مربوط به اخذ مجوزهای مورد نیاز سرمایه‌گذاران از جمله اعلامیه تاسیس، مجوز سازمان حفاظت محیط زیست، پروانه‌های انشعاب مربوط به آب، برق، گاز و تلفن، پروانه اکتشاف و استخراج معادن و غیره از دستگاه‌های ذی ربط پیش از صدور مجوز سرمایه‌گذاری خارجی
- انجام هماهنگی‌ها و پیگیری‌های لازم با واحدهای اجرایی دستگاه‌های مرتبط با درخواست‌های سرمایه‌گذاری خارجی
- پذیرش متقاضیان سرمایه‌گذاری در استان و پیگیری امور مربوط به سرمایه‌گذاری‌ها از طریق دستگاه‌های اجرایی ذی ربط
- دریافت درخواست سرمایه‌گذاران خارجی به همراه سایر مدارک مورد نیاز و هماهنگی با سازمان سرمایه‌گذاری و کمک‌های اقتصادی و فنی ایران به منظور صدور مجوز سرمایه‌گذاران

۲ پس از اخذ مجوز سرمایه‌گذاری خارجی

- انجام هماهنگی لازم در امور مربوط به سرمایه‌گذاری خارجی در مراحل پس از صدور مجوز سرمایه‌گذاری خارجی شامل ثبت شرکت مشترک ثبت سفارش برای ورود ماشین آلات و تجهیزات امور مربوط به ورود و خروج سرمایه، مسائل گمرکی و مالیاتی و غیره
- پیگیری اقدامات پس از صدور مجوز سرمایه‌گذاری خارجی از جمله مسائل اداری و ورود سرمایه‌های خارجی
- پیگیری مشکلات اداری متقاضیان سرمایه‌گذاری با سایر دستگاه‌های اجرایی
- ایجاد هماهنگی بین دستگاه‌ها در جهت رفع مشکلات و موانع مربوط به سرمایه‌گذاری به منظور رفع مشکلات توسط استاندار و بهره‌گیری از حمایت‌های استاندار در جهت رفع مشکلات موجود
- انجام امور محول شده مربوط به نظارت و راهبری طرح‌های سرمایه‌گذاری از طرف سازمان

۳ امور اجرایی و محتوایی

- شناسایی و گردآوری فرصت‌های سرمایه‌گذاری استان مطابق نمونه آرایه شده توسط سازمان سرمایه‌گذاری خارجی
- تهیه کتابچه راهنمای سرمایه‌گذاری استان شامل گردش کار سرمایه‌گذاری، ذکر مسئولان دستگاه‌های مرتبط به همراه شماره تماس و مشخصات ارتباطی دستگاه‌های صادر کننده مجوز
- برگزاری کارگاه‌های آموزشی به منظور آشنایی فعالان اقتصادی، مسئولان و کارشناسان دستگاه‌های اجرایی استان با موضوع سرمایه‌گذاری و روش‌های تامین مالی بین‌المللی و مسائل مرتبط
- معرفی استان و توانمندی‌های اقتصادی آن با به کارگیری ابزارهای تبلیغاتی و اطلاع رسانی
- حمایت و ترویج افکار و اندیشه سرمایه‌گذاری، فرهنگ سازی و مساعد نمودن فضای سرمایه‌گذاری در بین اقشار مختلف جامعه جهت تبیین اهمیت و جایگاه سرمایه‌گذاری





شهرید چمران - جنوب
Chamran Exp. - South
Mahan Exp. - East

شهرید امام خمینی
ناصر Exp.
Imam Khomeini Airport

شهرید چمران - شمال
ارین - ولنجک
Chamran Exp. - North
Arin - Velenjak





importation of machines and equipment, customs, tax affairs, etc.

- Coordination required among the departments in facilitating in foreign investment by the governor and benefitting his protections
 - Implementation of affairs in respect of monitoring investment projects by the organization.
 - Following up after issuing FDI license including administrative actions and import of foreign investment
 - Following up administrative problems of investment applicants by other executive departments
- Natural Gas Condensate, LP, LNG, Methanol(export)
countries: China, UAE, Iraq, ROK
CKD, Feed Corn, Rice, Soy Bean(import)countries:
China, UAE, ROK, Turkey

3 Executive affairs

- Detection and compilation of the province investment opportunities based on the template provided by the foreign investment organization.
 - Providing investment guide book containing investment workflow, listing name and contact info of the executive organizations' authorities.
 - Holding training workshops to introduce the economic activists, authorities and experts to the investment and financing methods, etc.
 - Introducing economic capabilities of the province by benefitting informative tools
 - Protection and promotion of investment thought, culturalization and expansion of investment environment among various social classes in order to realize the investment significance and status.
- Therefore, all of the economists and investors are appreciated to choose Tehran province to hold their investment in addition to considering infrastructures and incentives.

In this regard, Tehran Investment Service Center has been a sustainable protector and guidance of foreign investors in the steps of pre-investment, issuing license and post-investment.

Add: No.136, Mirdamad Blvd, Tehran, Iran.
Postal Code: 1548944911
Tel:+98 21-22903005 Fax:+98 21-22225079
www.investintehran.ir

Investment Services Center of Tehran

Introduction of Center

Investment Services Center of Tehran has been formed With regard to importance, urgency and role of investment in order to developing of the economy, to improve the doing business environment, to make a sustainable economic growth, to protect, facilitate and accelerate domestic and foreign investors, to detect investment opportunities for investors in achieving economic resources related to the required infrastructures and to realize the aims mentioned in the context of Iran's "Foreign Investment Promotion and Protection Act" (FIPPA) and the forth section of bylaw was ratified by the board of Ministries and governor No. 44458/26986 dated 28th Apr 2010 at **General Directorate of Economic Affairs & Finance in Tehran Province.**

Investment Services Center of Tehran is in service of investment applicants in Tehran province and the organization would be the referral of the province in addition to the authorities assigned by the Organization for Investment Economic and Technical Assistance of Iran.

According to the article 6 of the abovementioned bylaw; in addition to the presence of competent authorities in the meetings; in relation to applications for admission, the investment license shall, after the approval of the Board, be issued upon confirmation and signature by the Minister of Economic Affairs and Finance.

Duties

According to the article 20 ratified in 2002 and article 4 approved by the Board of Ministries No. 44458/26986 dated 28th Apr 2010; Tehran Investment Service Center is obliged to act as follow:

1 Before the issuance of the investment license

- Provision of information and necessary advice to Foreign Investors.
- Coordination required in respect of affairs related to securing necessary licenses, including, but not limited to, the declaration of establishment, the license of the organization for protection of the environment, the permits, for subscriptions relating to water, electricity, fuel and telephone, exploration and exploitation licenses for mines, etc. from the relevant agencies Prior to the issuance of the investment license
- Coordination required in respect of affairs with executive departments of their respective agencies in respect of applications for foreign investment
- Applying investment applicants and monitoring the respective affairs by executive departments.
- Catching the applications of foreign investors and other evidences and coordination with the Organization for Investment and Technical Assistance of Iran for issuing the licenses.

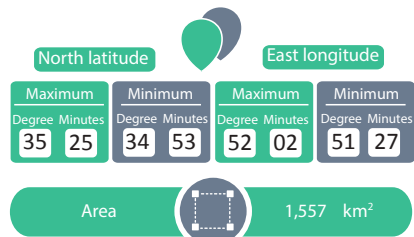
2 After the issuance of the investment license

- Coordination required in respect of affairs related to the foreign investment subsequent to the issuance of the investment license order including registration of joint venture company, registration of orders, and issues related

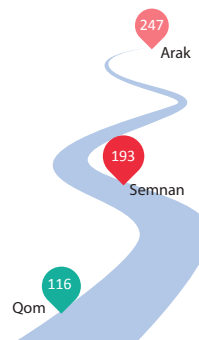


Investment Capacities of

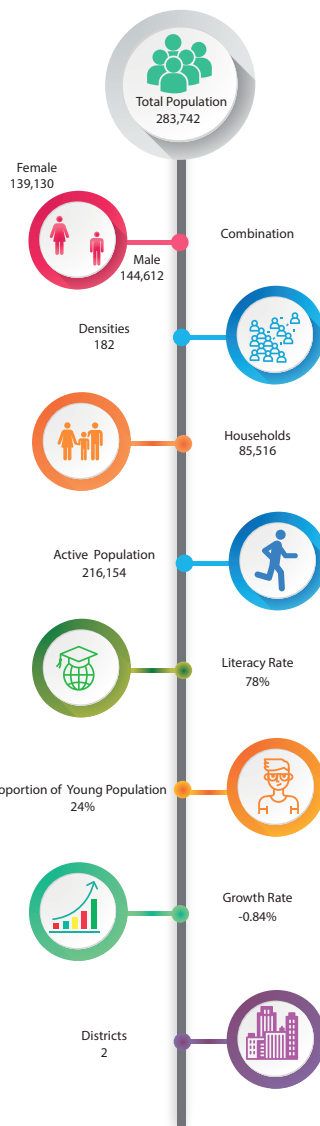
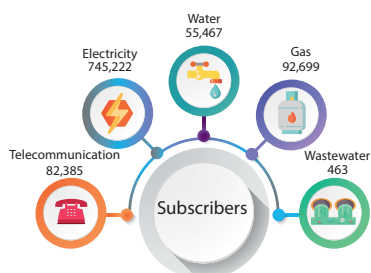
Varamin County



Weather: Cold & Arid
 Average Annual Temperature: 20.1° C
 Average Annual Rainfall: 116.6 ml
 Frosty Days: 45 days
 Average Wind Velocity: 2.5 m/s

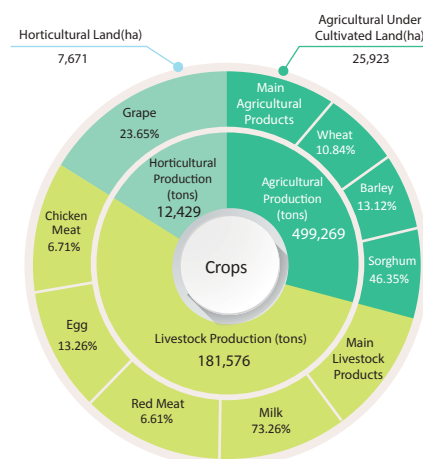


Distance from the County to the Neighboring Provinces (km)



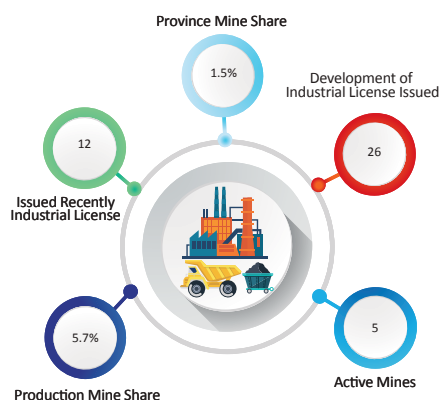
- Tourist Attractions:**
1. Varamin Jame Mosque
 2. Aladdin Shrine Tower
 3. Imamzadeh Yahya

Agriculture



Total Land Area (ha): 155,700

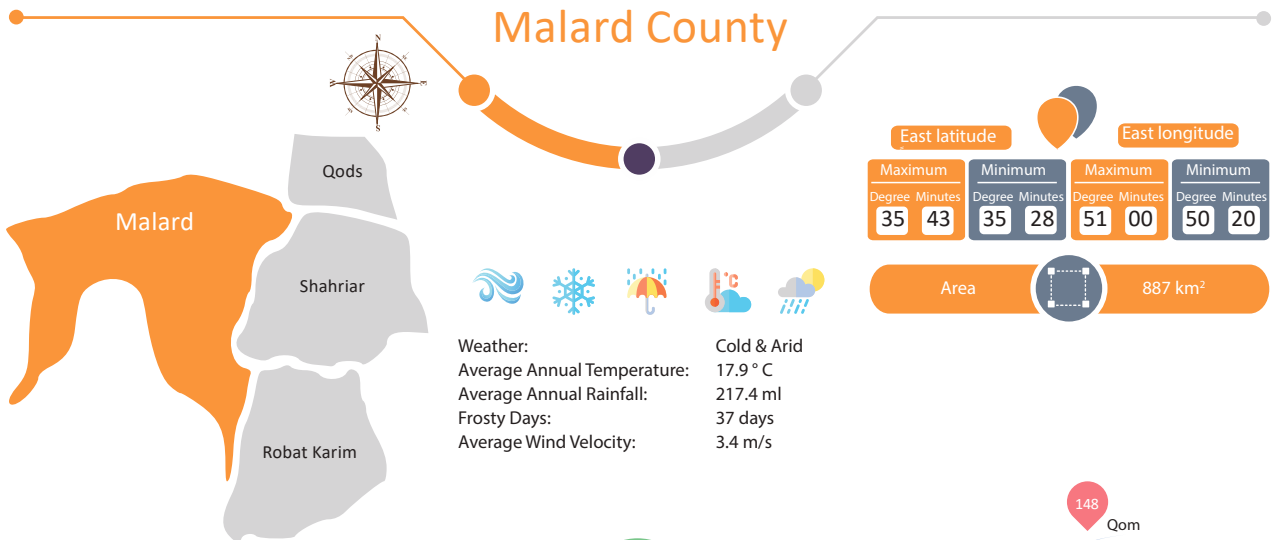
Industry & Mine



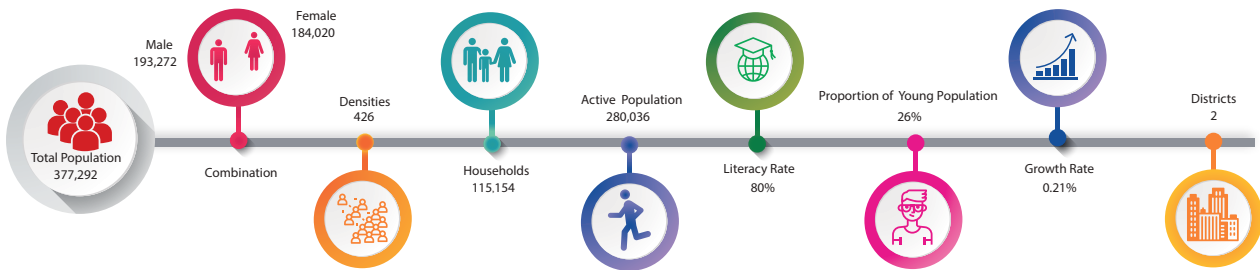
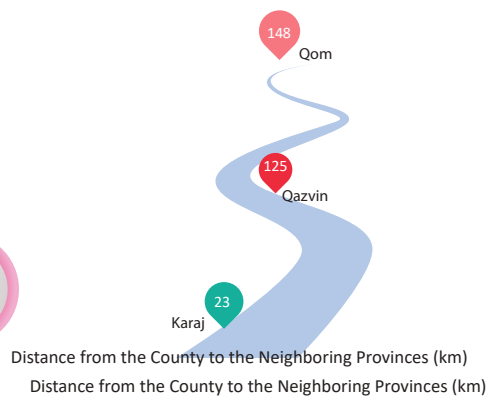
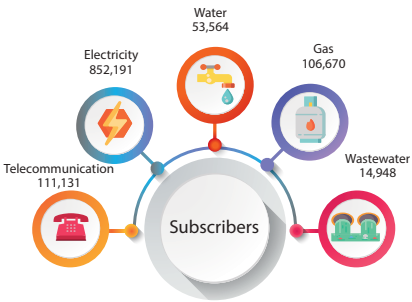
mines: Silica, Sodium Sulfate

Investment Capacities of

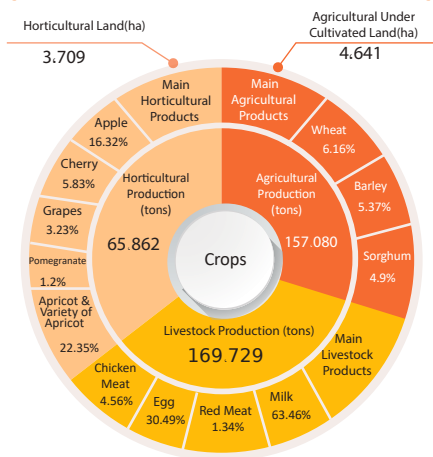
Malard County



Weather: Cold & Arid
 Average Annual Temperature: 17.9 °C
 Average Annual Rainfall: 217.4 ml
 Frosty Days: 37 days
 Average Wind Velocity: 3.4 m/s



Agriculture



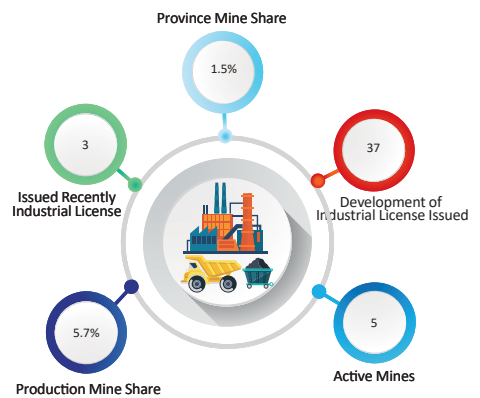
Total Land Area (ha): 88,600

Tourism



- Tourist Attractions**
1. Imamzadeh Bibi Sakineh
 2. Malaard Poppy Plain
 3. Kūh-e Kaftarlū

Industry & Mine



Mines: ubble stone, Decorative Stone, Silica



Poppy Plain (Malard)



Ala ol-Dowleh- Shrine Tower (Varamin)

Investment Capacities of

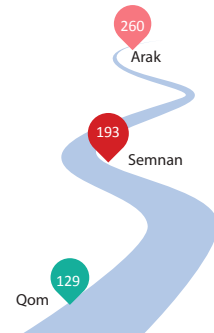
Qarchak County



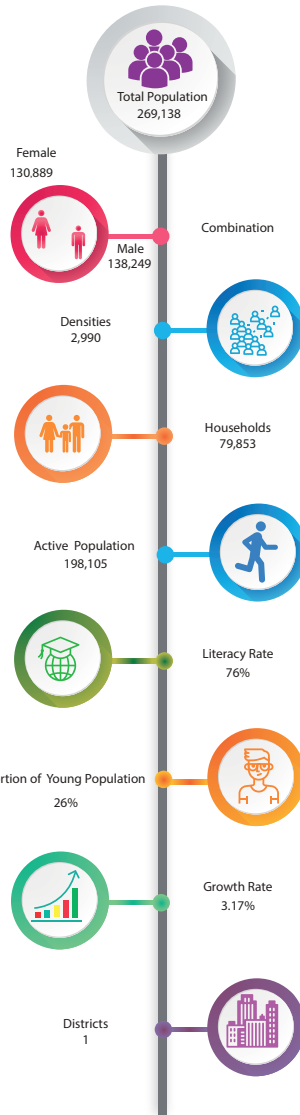
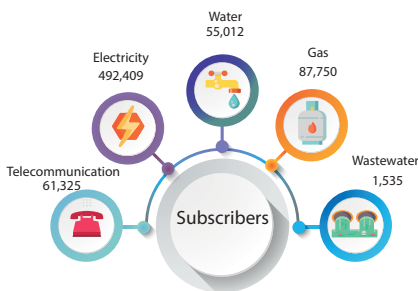
Weather: Cold & Arid
 Average Annual Temperature: 20.1 °C
 Average Annual Rainfall: 142.4 ml
 Frosty Days: 45 days
 Average Wind Velocity: 2.5 m/s

North Latitude		East Longitude	
Maximum	Minimum	Maximum	Minimum
Degree	Minutes	Degree	Minutes
35	27	35	21
51	37	51	29

Area: 90 km²

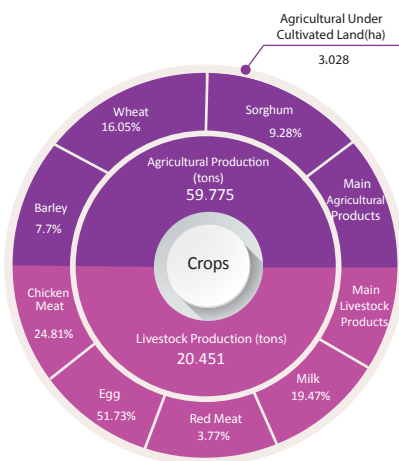


Distance from the County to the Neighboring Provinces (km)



- Tourist Attractions:**
1. Pardis Tappeh (Hill)
 2. Poinak Village
 3. Qarchak Forest Park

Agriculture

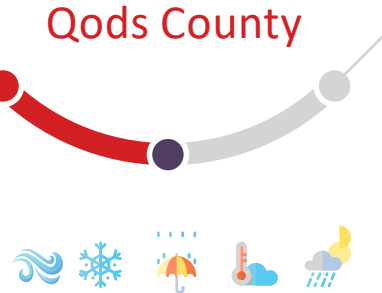
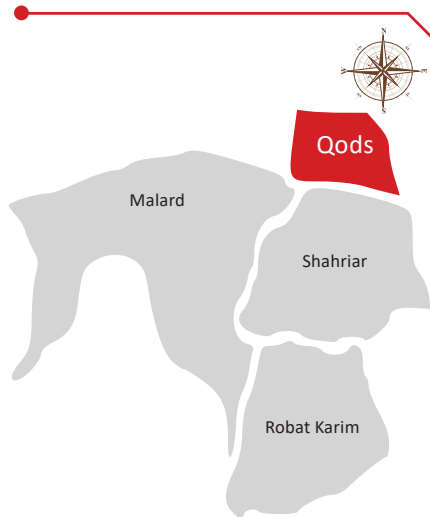


Total Land Area (ha): 9,000



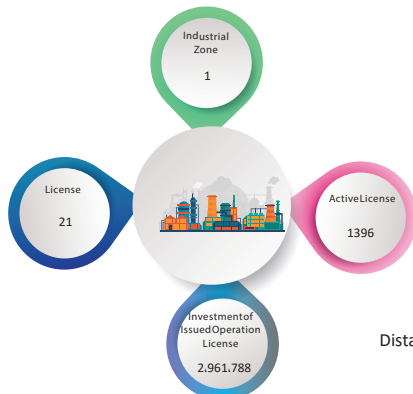
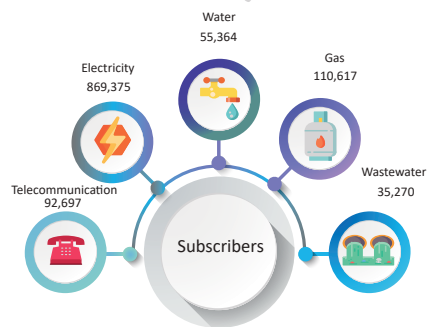
Investment Capacities of

Qods County

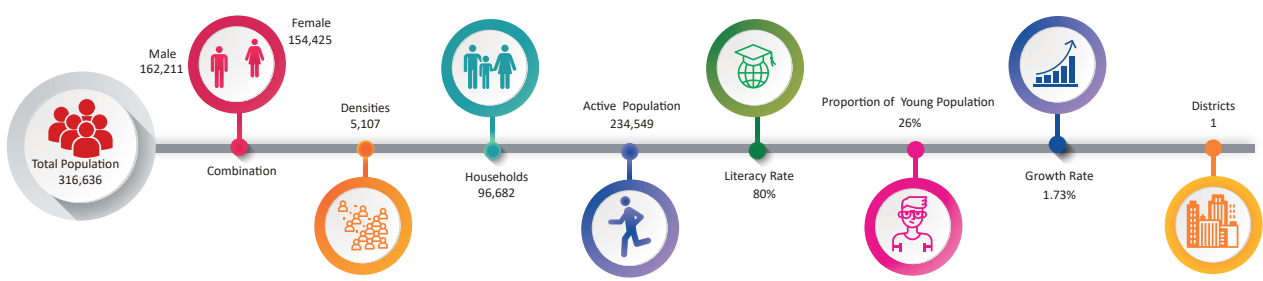


Weather:
 Average Annual Temperature: 17.9 °C
 Average Annual Rainfall: 223.5 ml
 Frosty Days: 37 days
 Average Wind Velocity: 3.4 m/s

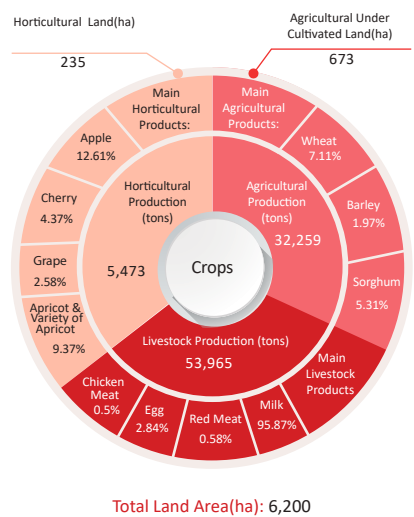
North Latitude		Minimum		Maximum		East Longitude		Minimum		Maximum	
Degree	Minutes	Degree	Minutes	Degree	Minutes	Degree	Minutes	Degree	Minutes	Degree	Minutes
35	44	35	39	51	11	51	01	Area 67 km ²			



Distance from the County to the Neighboring Provinces (km)



Agriculture

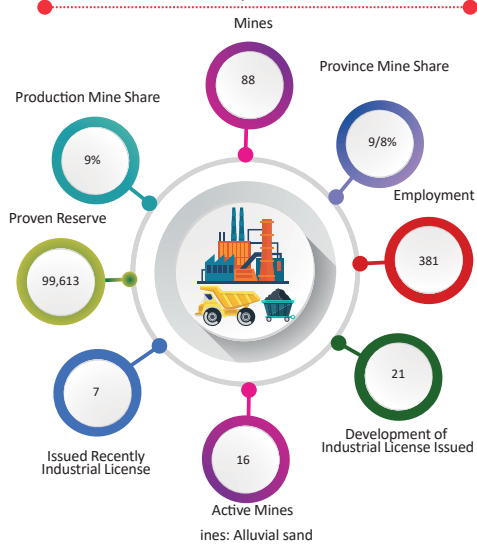


Tourism



- Tourist Attractions:**
1. Kavousieh Hill
 2. Imamzadeh Hazratain
 3. Hammam Qale

Industry & Mine





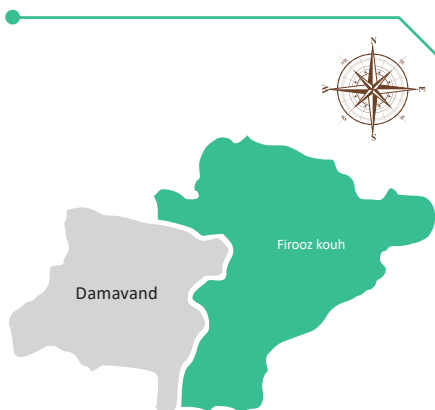
Historic Bath House (Qods)



Forest Park (Qarchak)

Investment Capacities of

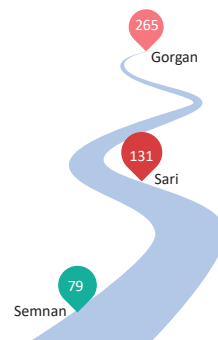
Firooz kough County



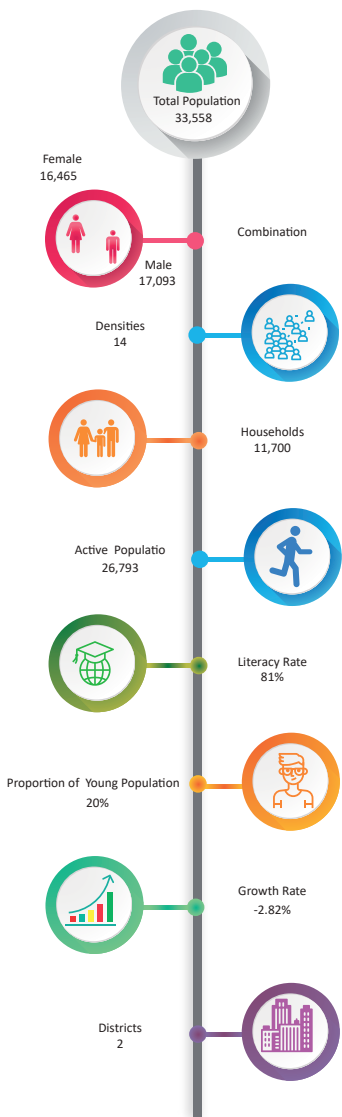
Weather:
 Average Annual Temperature: 10.3 ° C
 Average Annual Rainfall: 290.2 ml
 Frosty Days: 148 days
 Average Wind Velocity: 2.5 m/s

North Latitude		East Longitude	
Maximum	Minimum	Maximum	Minimum
Degree	Minutes	Degree	Minutes
35	56	35	19
53	09	52	13

Area: 2,385 km²

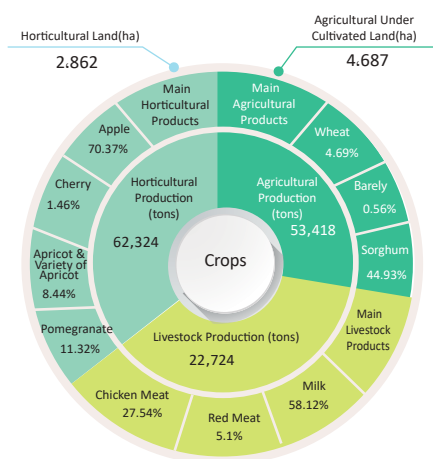


Distance from the County to the Neighboring Provinces (km)



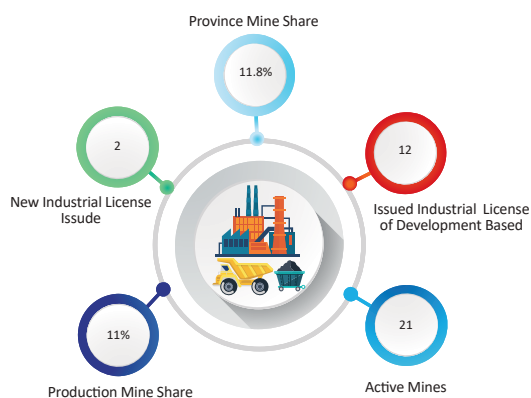
- Tourist Attractions:**
1. Tangeh Savashi (Vashi)
 2. Harandeh Village
 3. Burnik Cave

Agriculture



Total Area of Land(ha): 238,500

Industry & Mine



Resources: Rubble stone, Gravel, Lime, Alluvium

Investment Capacities of

Shahriar County

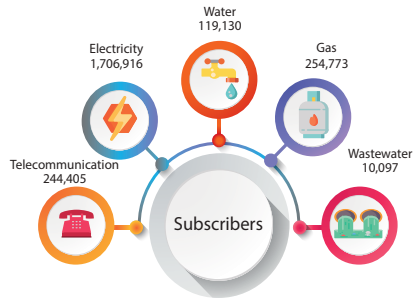


North Latitude		East Longitude	
Maximum	Minimum	Maximum	Minimum
Degree	Minutes	Degree	Minutes
35	43	51	13
35	29	50	48

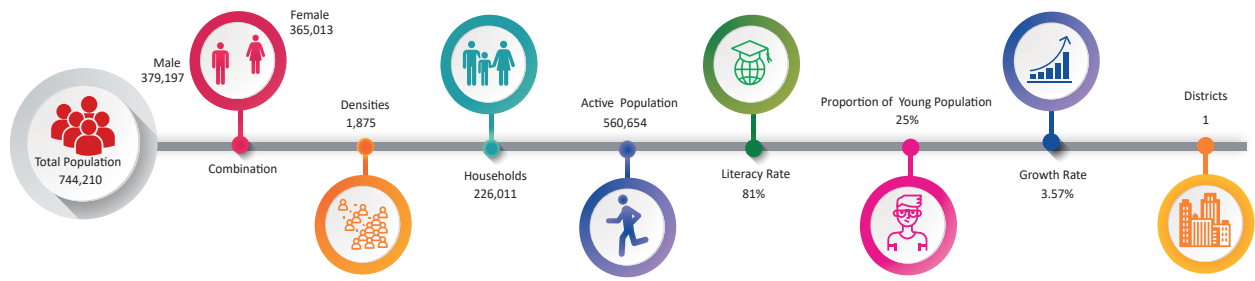
Area: 392 km²

Weather:
 Average Annual Temperature: 17.9 °C
 Average Annual Rainfall: 201 ml
 Frosty Days: 37 days
 Average Wind Velocity: 3.4 m/s

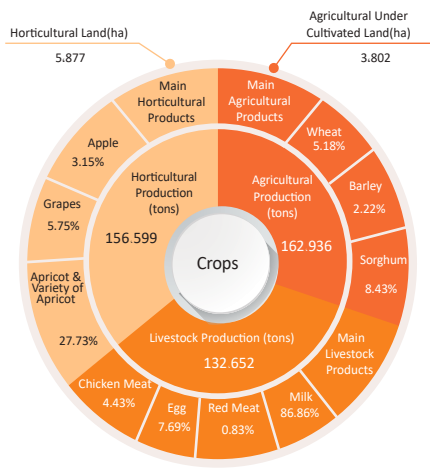
Cold & Arid



Distance from the County to the Neighboring Provinces (km)



Agriculture



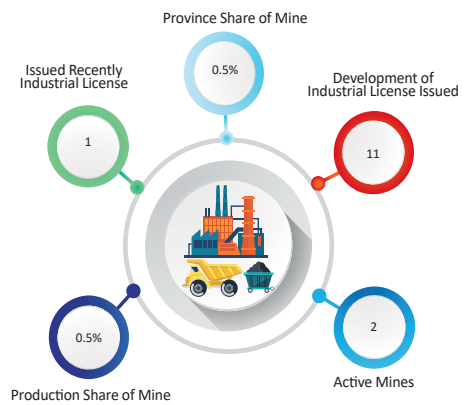
Total Land Area (ha): 29,700

Tourism



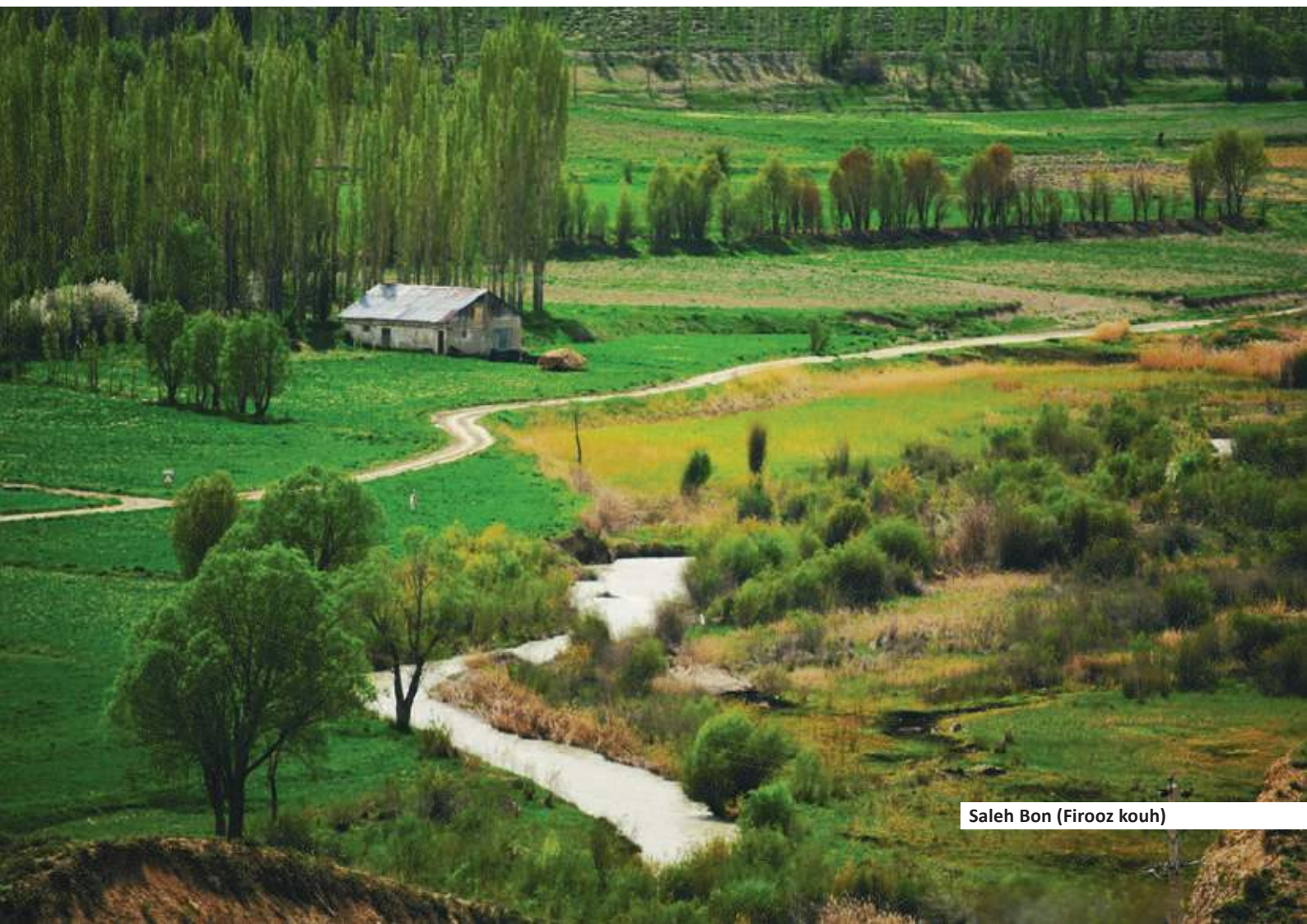
- Tourist Attractions:**
1. Takht-e Rostam Mountain
 2. Imamzadeh Ismael
 3. Jooghin Tappeh (hill)

Industry & Mine





Joghin Hill (Shahriar)



Saléh Bon (Firooz kauh)

Investment Capacities of

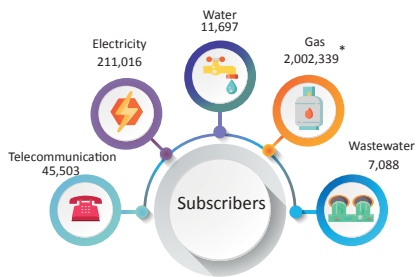
Shemiranat County



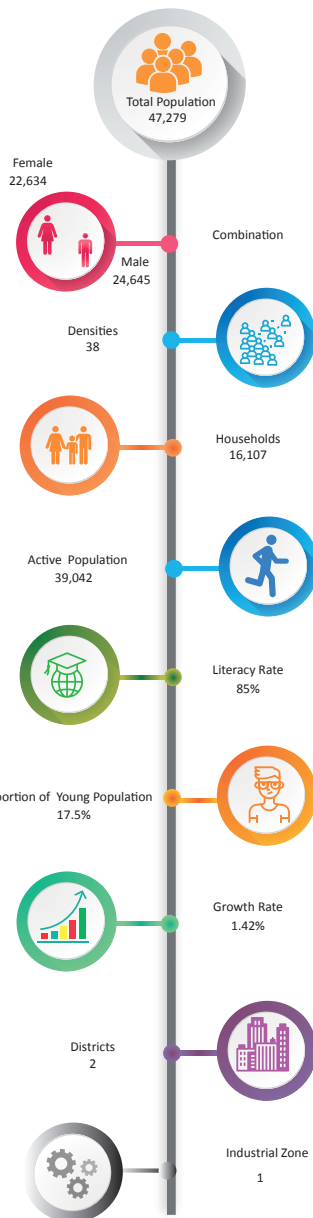
Weather: Cold & Semi - Humid
 Average Annual Temperature: 15.5 °C
 Average Annual Rainfall: 586.5 ml
 Frosty Days: 51 days
 Average Wind Velocity: 1 m/s

North Latitude		East Longitude	
Maximum	Minimum	Maximum	Minimum
Degree	Minutes	Degree	Minutes
36	07	51	53
35	46	51	21

Area: 1,260 km²



* Total of Tehran, Ray & Shemiranat



Distance from the County to the Neighboring Provinces (km)

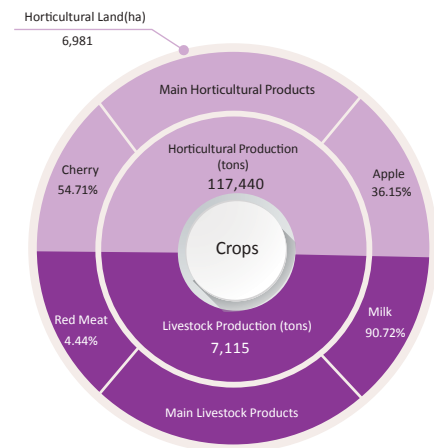
Tourism



Tourist Attractions:

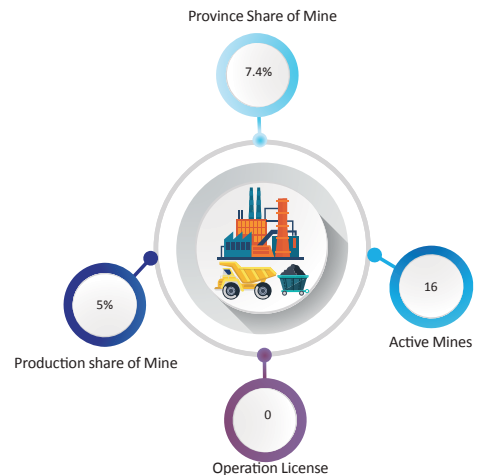
1. Tochal Sport Complex
2. Sa'd-Abad Complex
3. Niavaran Complex

Agriculture



Total Land Area (ha): 126,000

Mine



Mines: Basalt, Red and Green Rubble stone, Phosphate

Investment Capacities of

Rey County

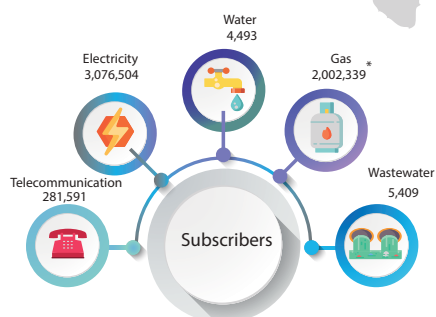


North Latitude		East Longitude	
Maximum	Minimum	Maximum	Minimum
Degree	Minutes	Degree	Minutes
35	37	51	41
35	06	50	50

Area: 2,324 km²



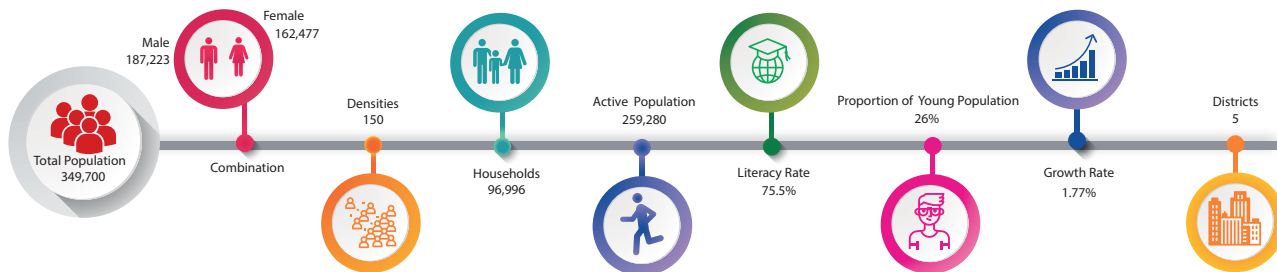
Weather: Cold & Arid
 Average Annual Temperature: 17.5 °C
 Average Annual Rainfall: 150.2 ml
 Frosty Days: 48 days
 Average Wind Velocity: 5 m/s



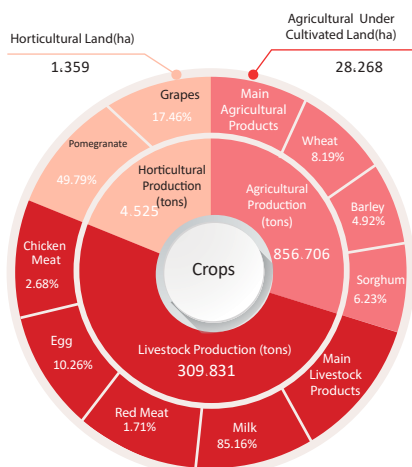
* Total of Tehran, Ray & Shemiranat



Distance from the County to the Neighboring Provinces (km)



Agriculture



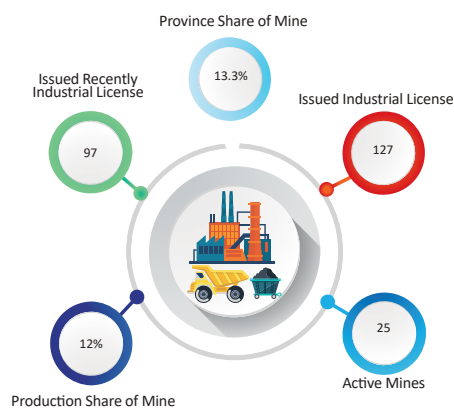
Total Area of Land (ha): 232,400

Tourism



- Tourist Attractions:**
1. Shah Abd al-Azim Shrine
 2. Tughrul Tower
 3. Bahram Fire Temple
 4. Cheshmeh-Ali Spring

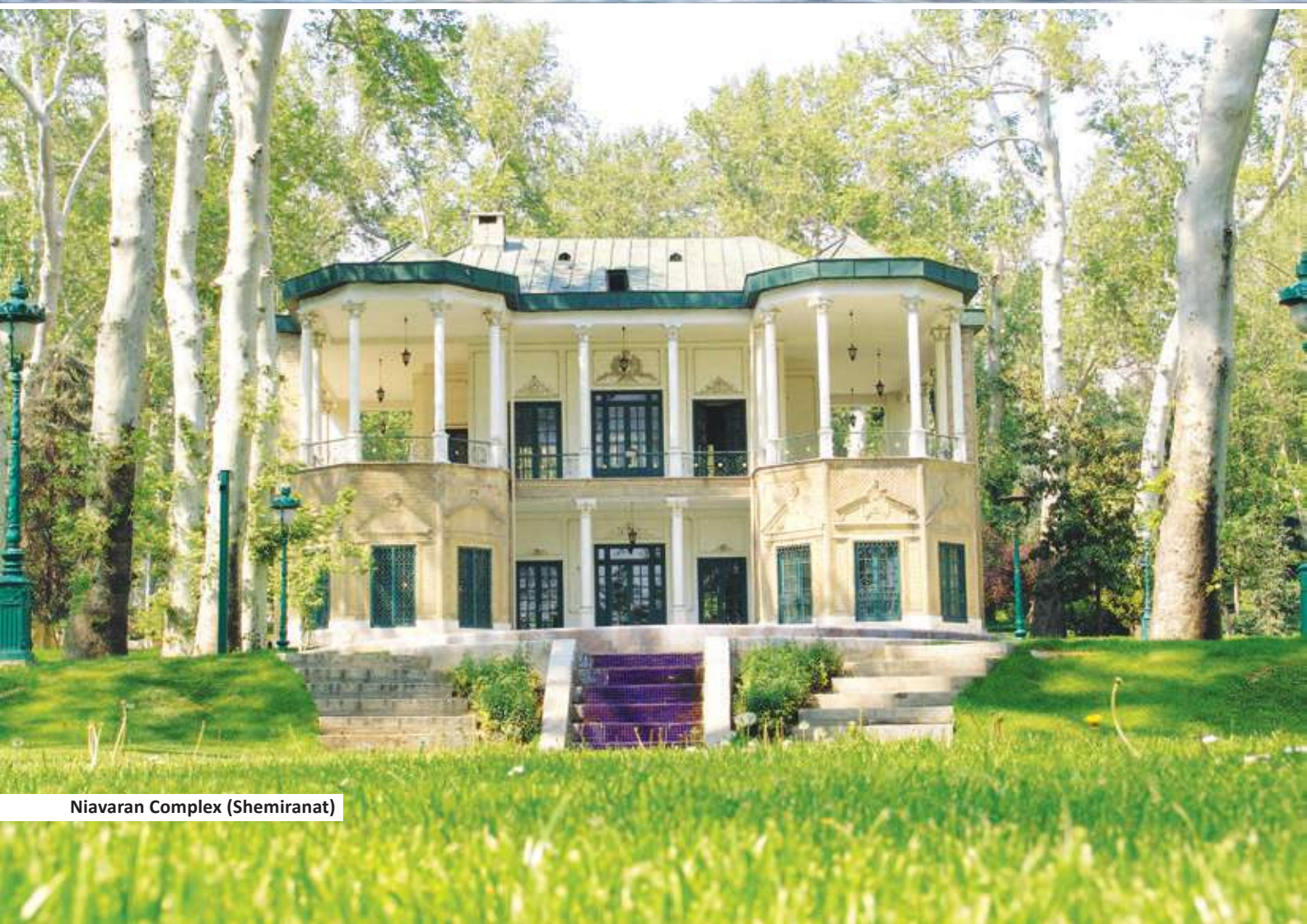
Industry & Mine



ines: Lime, Rubble stone, Sodium sulfate, Gravel

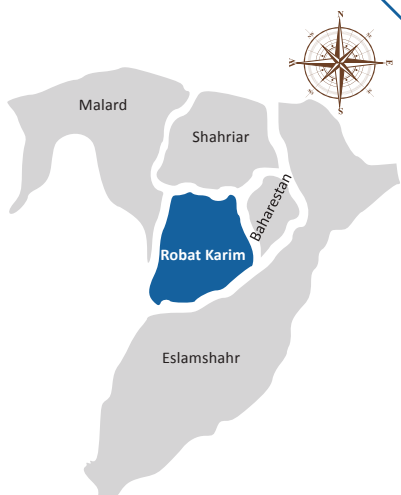


Tughrul Tower (Rey)



Niavaran Complex (Shemiranat)

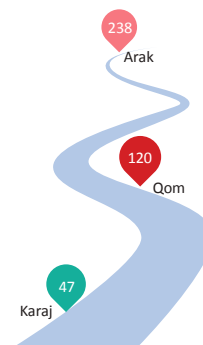
Investment Capacities of RobatKarim County



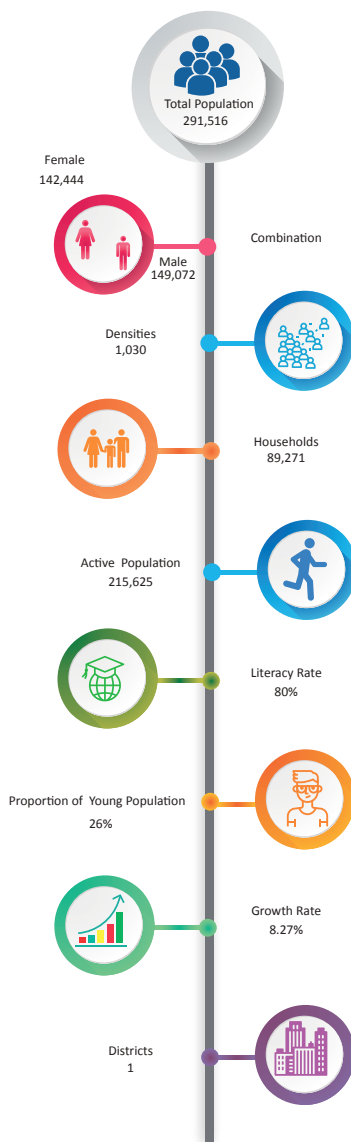
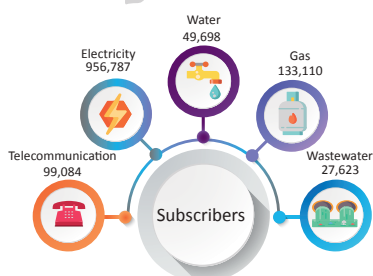
Weather:
 Average Annual Temperature: Cold & Arid
 Average Annual Rainfall: 17.5 ° C
 Average Annual Rainfall: 183.3 ml
 Frosty Days: 48 days
 Average Wind Velocity: 5 m/s

North Latitude		East Longitude	
Maximum Degree	Minimum Degree	Maximum Degree	Minimum Degree
35	34	51	13
34	23	13	53

Area: 283 km²



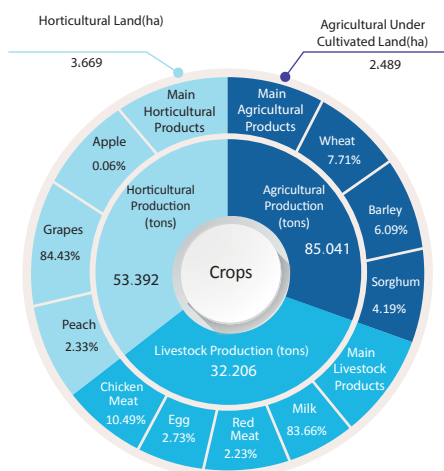
Distance from the County to the Neighboring Provinces (km)



Tourist Attractions:

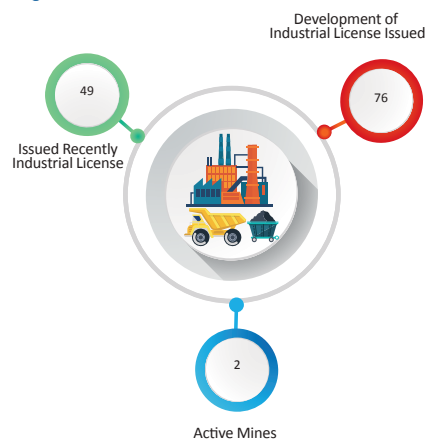
1. Keygavar Hill
2. Sangi Caravanserai
3. Haj Kamal Caravanserai

Agriculture



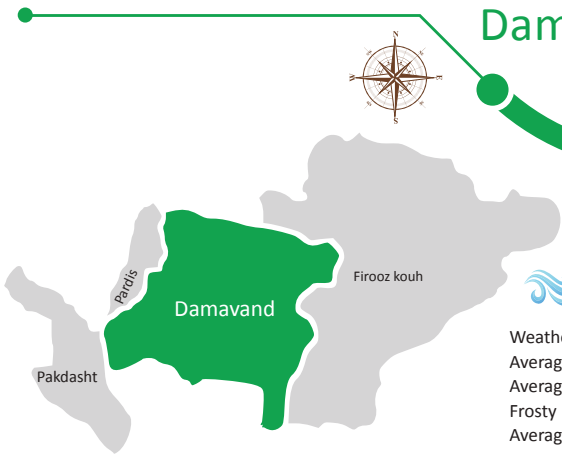
Total Land Area (ha): 28,300

Industry & Mine



Investment Capacities of

Damavand County

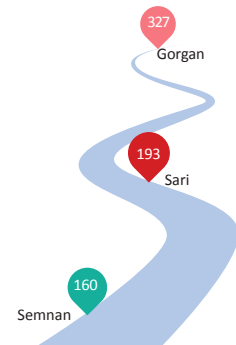
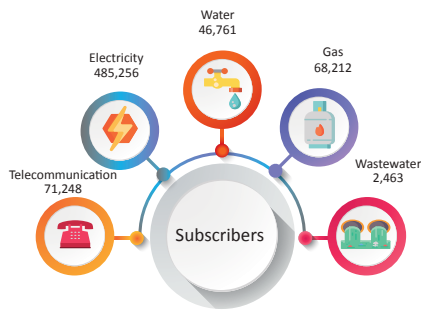


North Latitude		East Longitude	
Maximum	Minimum	Maximum	Minimum
Degree	Minutes	Degree	Minutes
35	51	35	22
52	33	51	48

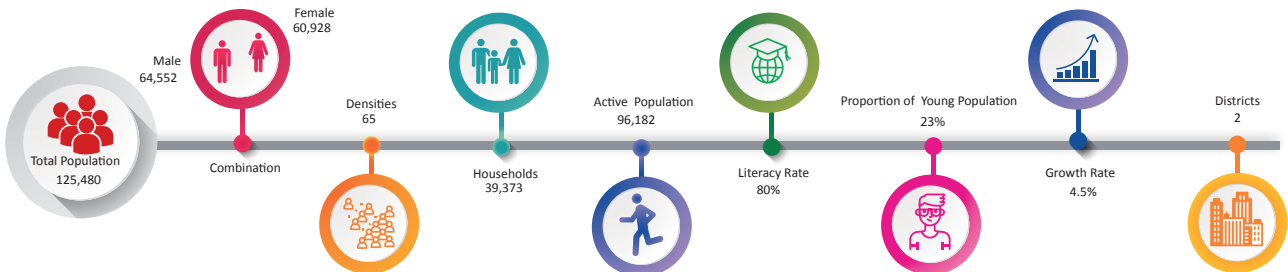
Area: 1,932 km²



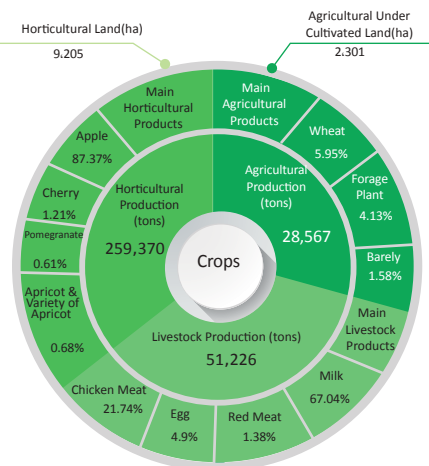
Weather: Cold & Semi-Humid
 Average Annual Temperature: 13 °C
 Average Annual Rainfall: 345.9 ml
 Frosty Days: 103 days
 Average Wind Velocity: 2 m/s



Distance from the County to the Neighboring Provinces (km)



Agriculture



Total Land Area(ha): 193,200

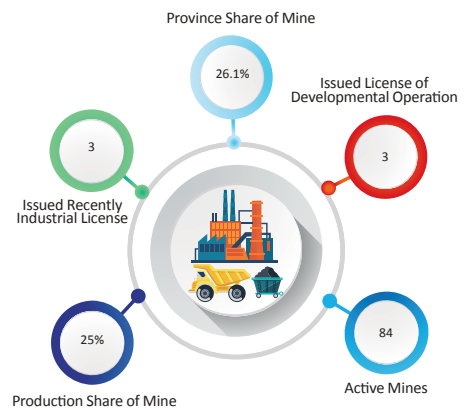
Tourism



Tourist Attractions:

1. Ab-Ali Ski Resort
2. Roodafshan Cave
3. Cheshmeh A'la
4. Tar & Havir Lakes

Industry & Mine



Mines: Lime, Bauxite, Travertine, Rubble stone, Baryte, Industrial Soil



Ab-Ali Ski Resort (Damavand)



Haj Kamal Caravanserai (Robat Karim)